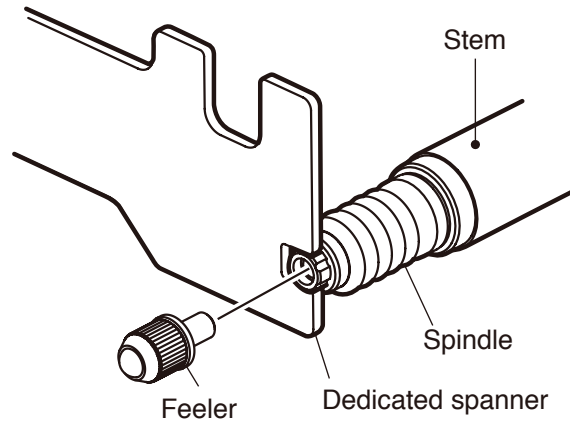
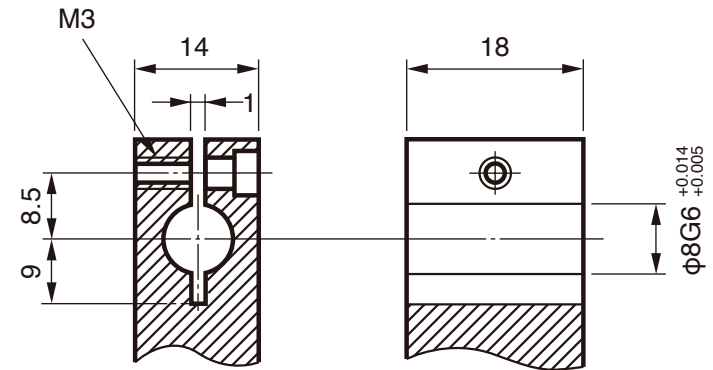


DK812S installation cautions

Feeler installation/removal method



Mounting holder dimensions and tolerance

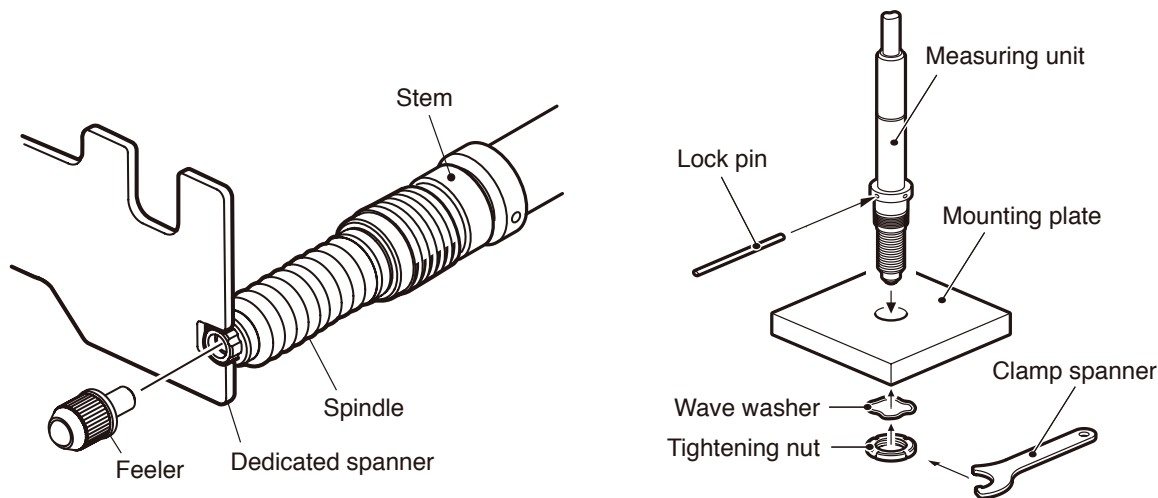


Tightening torque: 0.6 N·m
Material: In case of SUS303

Unit: mm

DK812SF installation cautions

Feeler installation/removal method



- The recommended value of measuring unit mounting hole is $\phi 9.7 \pm 0.15$ mm.
- The mounting thickness is as follows:
DK812SF Series: 7 to 11 mm
DK805SF Series: 9 to 11 mm
- Mounting parallelism affects measurement accuracy.
- Adjust the squareness to the surface to be measured or parallelism with respect to traveling to 0.02 mm/14 mm or less.