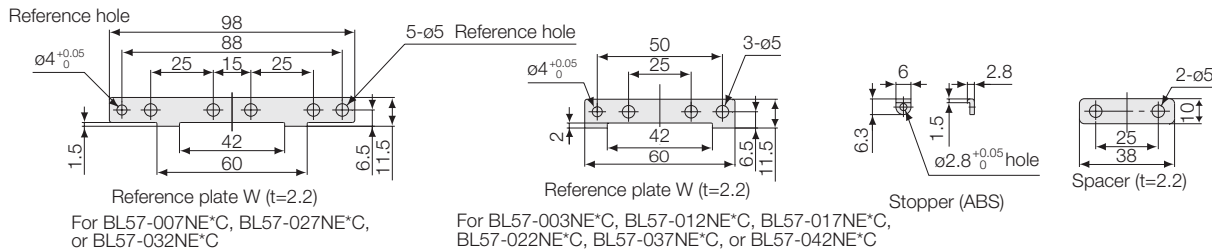
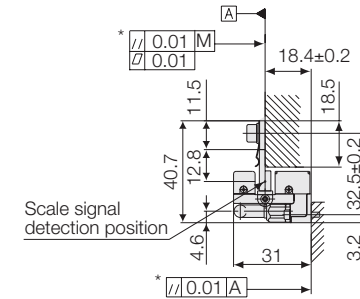
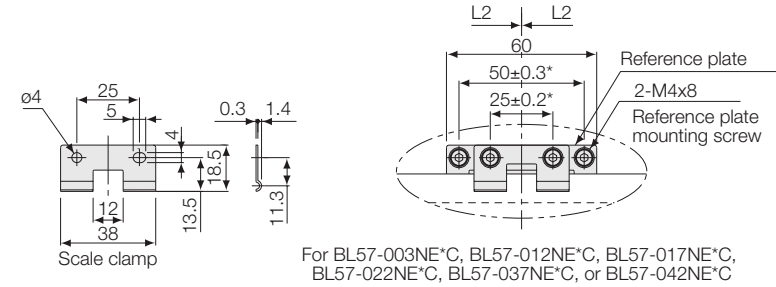
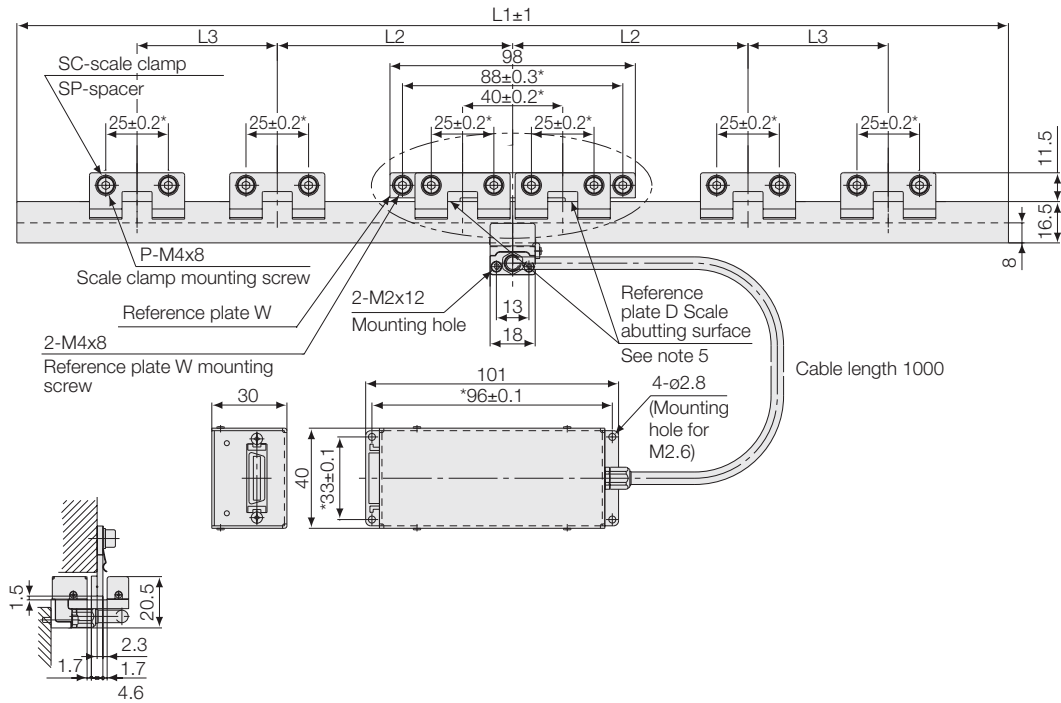


External Dimensions

● BL57-xxxNE*C (Effective length: 003 / 007 / 012 / 017 / 022 / 027 / 032 / 037 / 042)



Model	Effective length	L1	L2	L3	SC	SP	P
BL57-003NE*C	30	56	—	—	1	—	2
BL57-007NE*C	70	96	—	—	2	—	4
BL57-012NE*C	120	146	50	—	3	2	6
BL57-017NE*C	170	196	75	—	3	2	6
BL57-022NE*C	220	246	100	—	3	2	6
BL57-027NE*C	270	296	120	—	4	2	8
BL57-032NE*C	320	346	120	—	4	2	8
BL57-037NE*C	370	396	75	75	5	4	10
BL57-042NE*C	420	446	100	100	5	4	10

Unit: mm

Note 1: The items marked by an asterisk indicate the machining dimensions on the mounting surface. Note 2: The surface roughness of the scale mounting surface is $R_{max} = 6.3 S (250\mu\text{ inch})$.
 Note 3: The surface roughness of the detector head mounting surface is $R_{max} = 12.5 S (500\mu\text{ inch})$. Note 4: "M" refers to the machine guide.
 Note 5: When mounting the reference plate (reference plate W), adjust the plate so that the parallelism between the corresponding scale abutting surface and the machine guide is 0.01mm or less.